

## About this organisation

### Machine translation

This organisation has been machine-translated based on data provided in German.

Compositence offers solutions for the efficient development and production of components made from continuous fibres. With our patented production system, 2D / 3D preforms / stacks are manufactured directly from continuous fibres (carbon, glass or alternative fibre types) or tapes with a thermoplastic or thermoset matrix.

We offer production systems for depositing the different material classes (dry fibres, thermoplastic tapes and TowPregs); the different systems are controlled with the corresponding software. The software also supports you in production simulation and component design by providing appropriate interfaces. Typical applications are load-bearing, flat components, e.g. in motor vehicles, wind turbines, aviation, mechanical engineering or the sports and leisure industry. In addition to manufacturing systems, we also offer engineering services and the production of preforms and stacks. Our product portfolio includes - Systems for preforming with continuous fibres - Software for simulative component design and production simulation - Prototyping and small series - Preform / stack production

Mollenbachstraße 25  
71229 Leonberg  
Baden-Württemberg  
Germany  
[www.compositence.com](http://www.compositence.com)



### Organisation type

Small or medium-sized enterprise

### Sectors



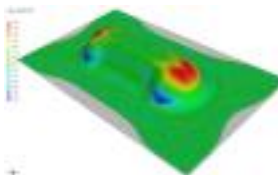
### Employees

10 up to 49

### Turnover

€2m - €10m

### Funding



## About this organisation

**Main areas covered** Automated Tape Placement Machines

**Infrastructure** AFP - Attachments, Consultation / compacting

**Certifications**

**Keywords** Tape Placement, Fibre placement, Stack - Production, Blank - Production, AFP; ATP

**Memberships**

## Overview of lightweighting expertise

### Machine translation

This organisation has been machine-translated based on data provided in German.

	Research	Development	Manufacturing & Supply
<b>Offer</b>			
<b>Products</b>			
Parts and components, Machines and plants	✓	✓	✓
<i>Services &amp; consulting</i>			

## Overview of lightweighting expertise

### Machine translation

This organisation has been machine-translated based on data provided in German.

	Research	Development	Manufacturing & Supply
<b>Field of technology</b>			
<b>Design &amp; layout</b> Lightweight design, Hybrid structures		✓	✓
<i>Functional integration</i>			
<i>Measuring and testing technology</i>			
<i>Modelling and simulation</i>			
<b>Plant construction &amp; automation</b> Plant construction, Others (Production systems for the automatic deposition of (carbon fibre) tapes.)	✓	✓	✓
<i>Recycling technologies</i>			
<b>Manufacturing process</b>			
<b>Additive manufacturing</b> Others (Tape Placement)	✓	✓	✓
<i>Coating (surface engineering)</i>			
<b>Fibre composite technology</b> Pre-preg processing, Others (Construction of "tailored stacks" using (carbon fibre) tapes.)	✓	✓	✓
<i>Forming</i>			
<i>Joining</i>			
<i>Material property alteration</i>			
<i>Primary forming</i>			
<i>Processing and separating</i>			
<i>Textile technology</i>			

Overview of lightweighting expertise

Machine translation

This organisation has been machine-translated based on data provided in German.

	Research	Development	Manufacturing & Supply
<b>Material</b>			
<i>Biogenic materials</i>			
<i>Cellular materials (foam materials)</i>			
<i>Composites</i>			
<b>Fibres</b> Aramid fibres, Basalt fibres, Glass fibres, Carbon fibres, Natural fibres			✓
<i>Functional materials</i>			
<i>Metals</i>			
<i>Plastics</i>			
<i>Structural ceramics</i>			
<i>(Technical) textiles</i>			

Contacts

Machine translation

This organisation has been machine-translated based on data provided in German.

**Contacts**

Mr Thomas Dobiasch  
*Sales Manager*  
[thomas.dobiasch@compositence.de](mailto:thomas.dobiasch@compositence.de)